



CX-EPD2000L

SERIES 20 PRE LOAD STRIKES

CENTERLINE LATCH ENTRY, 1/2" - 5/8" LATCH PROJECTION (THROW)



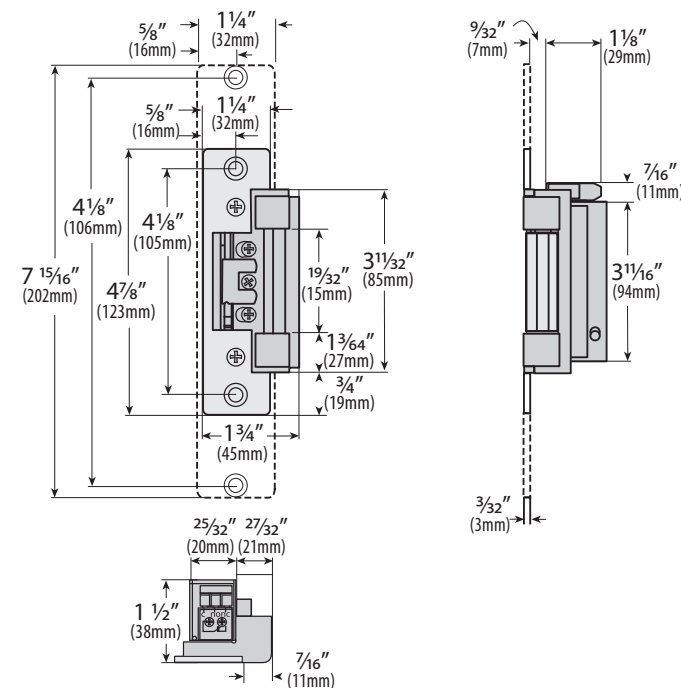
FEATURES

- PRE LOAD (FAIL SECURE ONLY)
20 LBS@12-24V AC.
- 4 FACEPLATE OPTIONS
- ADJUSTABLE KEEPER
- LATCH MONITORING, STANDARD
- STATIC STRENGTH 1,500LBS.
- SELECTABLE 12/24V AC/DC
- SELECTABLE FAIL SAFE/ FAIL SECURE
- REVERSIBLE FOR RIGHT OR LEFT HAND DOORS
- 5 YEAR LIMITED WARRANTY

DESCRIPTION

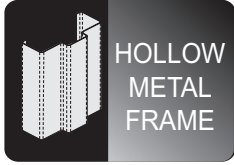
Camden Series 20 Pre Load electric strikes offer the highest pre load rating, 12/24V AC/DC operation, adjustable keeper, fail safe/fail secure operation, and latch monitoring. Latch cavity accommodates cylindrical locksets with 1/2" to 5/8" projection (1/8" door gap required) with a range of faceplates for installation in steel, aluminum and wood doors.

DIMENSIONS

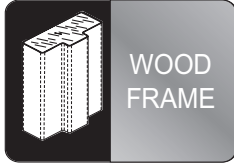


SERIES 20 PRE LOAD STRIKES

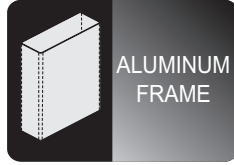
DOOR FRAME TYPES



HOLLOW
METAL
FRAME



WOOD
FRAME



ALUMINUM
FRAME

COMPATIBLE LOCKSETS

CYLINDRICAL
LOCKSET



ORDERING INFORMATION

ELECTRIC STRIKE ONLY

CX-EPD-2000L: STANDARD BODY, NO FACEPLATE

ELECTRIC STRIKE WITH FACEPLATE

CX-EPD-2010L: ANSI SQUARE, 4 7/8" X 1 1/4"

CX-EPD-2020L: ANSI ROUND, 4 7/8" X 1 1/4"

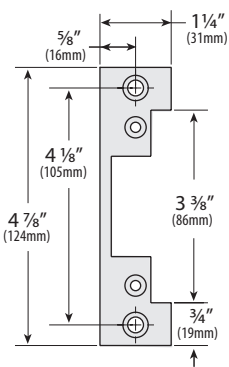
CX-EPD-2030L: HOLLOW METAL DOORS 6 7/8" X 1 1/4"

CX-EPD-2040L: WOOD DOOR 7 15/16" X 1 7/16"

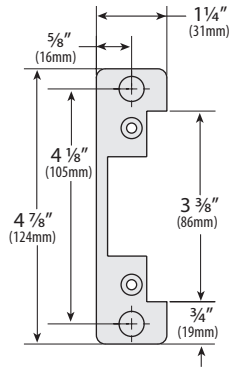
FACEPLATES

MODEL	DESCRIPTION
CX-ESP1	ANSI Square, 4 7/8" x 1 1/4", square corners, stainless steel
CX-ESP2	ANSI Round, 4 7/8" x 1 1/4", rounded corners, stainless steel
CX-ESP3	Hollow Metal Door, 6 7/8" x 1 1/4", rounded corners, stainless steel
CX-ESP4	Wood Door, 7 15/16" x 1 7/16", rounded corners, stainless steel

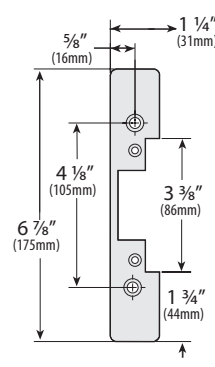
ESP1 - ANSI SQUARE



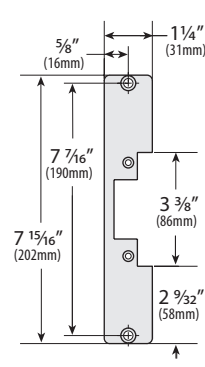
ESP2 - ANSI ROUND



ESP3 - HOLLOW METAL DOOR



ESP4 - WOOD DOOR



CROSS REFERENCE CHART

CAMDEN	RCI	ADAMS RITE	HES	ROFU	FOLGER ADAMS	VON DUPRIN	DYNALOCK
CX-EPD2000L	N/A	7400	7000	N/A	N/A	N/A	N/A